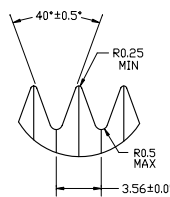
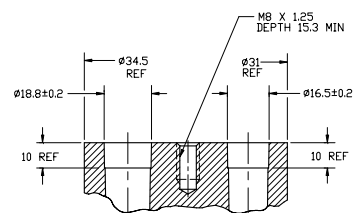


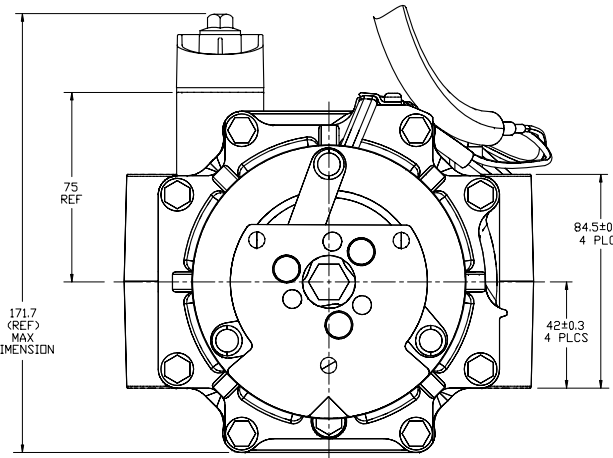
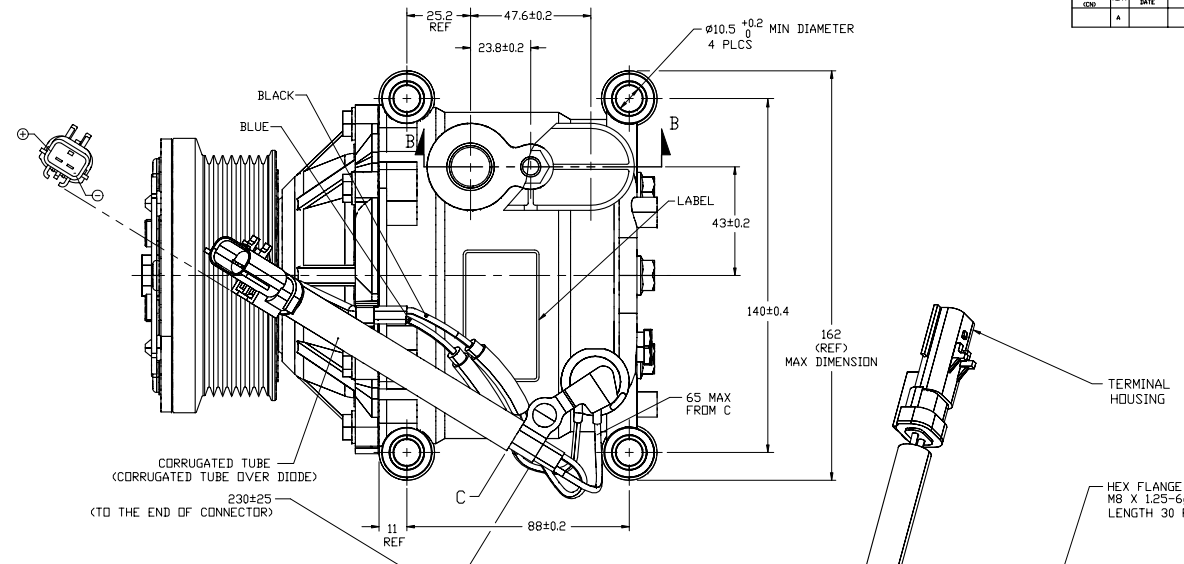
| PN | REV. | APPY. DATE | REVISIONS | DWN | ESGN | CHK | APPY. |
|----|------|------------|-----------------|-----|------|-----|-------|
| | A | | INITIAL RELEASE | | | | |



DETAIL A
SCALE 5:1

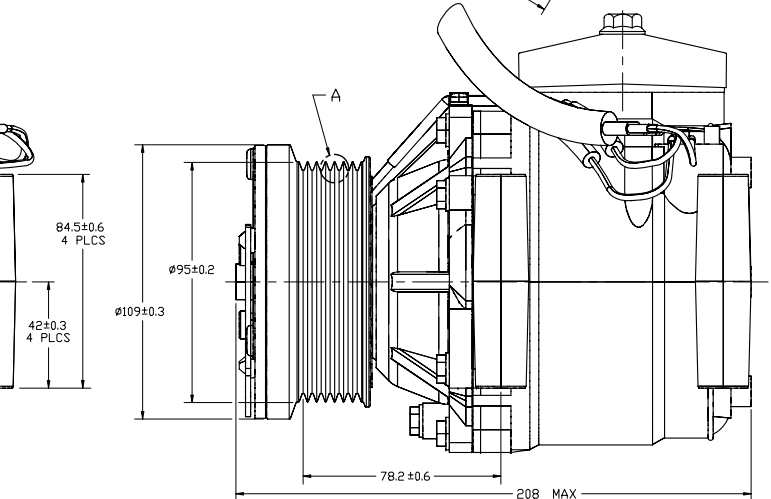


SECTION B-B



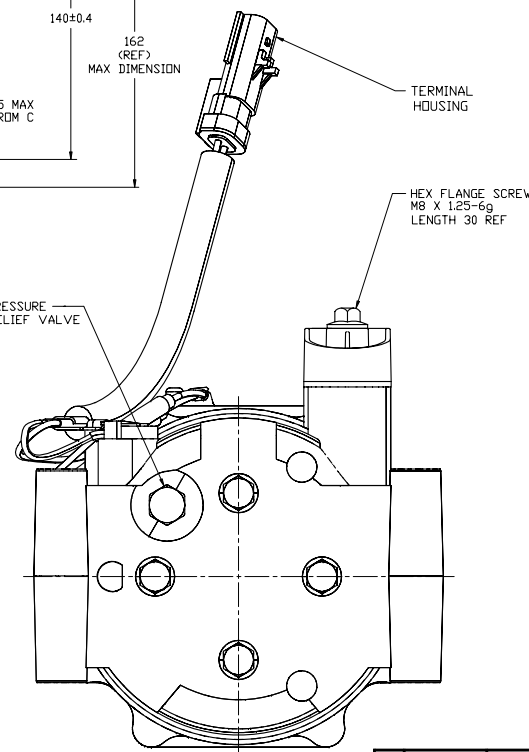
COMPRESSOR SPECIFICATIONS

| | |
|--|---------------------------|
| DISPLACEMENT PER REVOLUTION | 104.8cc/rev (6.4 in³/rev) |
| MAXIMUM ALLOWABLE INSTANTANEOUS R.P.M. | 12000 R.P.M. |
| REFRIGERANT | R134a |
| OIL (SP-15) | 240cc (14.6 fl. oz.) |



CLUTCH SPECIFICATIONS

| | |
|--------------------------------|--|
| RATED VOLTAGE | 12V DC |
| LEAD WIRE LENGTH | 230±25 mm |
| BREAKAWAY TORQUE | Min 35.3 N·m (26 ft lbf, 3.6 kgf·m) AT 12V |
| MINIMUM ENGAGEMENT VOLTAGE | 7.5V @ AIR GAP 0.5mm REF |
| POWER CONSUMPTION | 50 WATTS MAX |
| BELT TYPE | PV7 GROOVE TYPE |
| MAXIMUM ALLOWABLE BELT TENSION | 883 N (198 lbf, 90 kgf) |
| PULLEY DIAMETER | DIAMETER OVER BALL 95±0.2mm (Ø3.74in) |
| WEIGHT | 23.7N (5.33lbf, 2.42kgf) |
| CLUTCH TYPE | STANDARD AUTOMOTIVE CLUTCH |



RECOMMENDED CLUTCH CYCLING RATE

| | |
|------------|--|
| RPM | ALLOWABLE CYCLING RATE |
| TD 9000 | 4/MIN MAX |
| 9000-11000 | 2/MIN MAX |
| OVER 11000 | DO NOT RE-ENGAGE CLUTCH IF DISENGAGED. |

PRESSURE RELIEF VALVE SPECIFICATIONS

| | |
|------------------|--|
| OPENING PRESSURE | 7.67±0.70 N/m² (550±50 PSI, 0.782±0.07 kgf/m²) |
|------------------|--|

NOTES:
 1. COMPRESSOR/CLUTCH MUST CONFORM TO THE REQUIREMENTS OF SANDEN STANDARDS SES-316 AND SIA-ES-2002 REV. B.
 2. VOLUMETRIC EFFICIENCY, CAPACITY AND HORSEPOWER TO BE TESTED PER SANDEN ENGINEERING STANDARD SES-CC-316 (04/01/93).

| | |
|--|---|
| REV. LEVEL A RELEASED FOR PRODUCTION DATE: 6-18-03 APPY. DATE: 6-18-03 | SANDEN SANDEN INTERNATIONAL - U.S.A. INC. SCALE REF: 1:1 PLATED METRIC This drawing and the information contained hereon are CONFIDENTIAL and PROPRIETARY to Sanden International (U.S.A.), Inc. and shall remain the property of Sanden International (U.S.A.), Inc. unless otherwise stated in writing. INTERPRETATION OF THIS DRAWING PER ASME Y14.5M-1994 THIS HOLE COLLECTION MATERIAL: NAME: COMPRESSOR P/N: 4979-AFT-6000 REV. A |
|--|---|

DO NOT SCALE